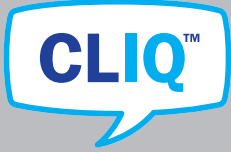


ASSA®



ASSA CLIQ

Electromechanical master keying

ASSA ABLOY

If these are your problems...

Lost or stolen keys, and illicit copies of keys in circulation

Leading to an increased risk of theft, intrusion or attacks on staff and customers...

A security system that cannot cope with your special requirements

Preventing you from granting varied levels of access for staff, operating different security levels according to time schedules, dealing with contractor visits or managing remote sites...

Time-consuming manual systems of key administration

Leading to errors and not providing you with sufficient information to manage your security effectively...

No means to control or audit staff movements into sensitive areas

Leaving you vulnerable to theft and stock shrinkage...

A system which is unable to adapt to organisational changes

Leading to a steady decline of your security over time, or else requiring the major expense of a wholesale replacement...



Health



Education

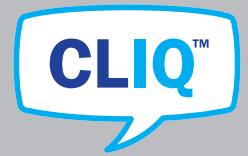
...we have the solution



Lock systems with built-in intelligence

The new CLIQ technology from ASSA combines the best of design and electronics in the smartest possible manner. This intelligent lock system is built into the new generation of ASSA dp™ lock cylinders.

CLIQ makes intelligent, flexible and high security lock systems possible. The system's mechanical design creates the basic foundation, which is made up of different security zones or levels. The electronic programming of the keys gives authorisation to individuals or to groups of individuals, allowing you to manage and control your security electronically.



KEY FEATURES

Off-line system

- Instant cancellation of lost or stolen keys

- Full audit trail of all events

- No wiring: the system is battery-operated

- Time schedules and restrictions may be created

- All standard cylinder shapes and padlocks are available

- Impossible to manipulate the system or copy keys

- Absolute key control

- The level of security is maintained over the life of the system

- Cost efficient



High Security



Commercial



Keys

Electromechanical User Keys

CLIQ User Keys feature a unique electronic ID, as well as all the physical security features of a mechanical key. This ensures a greatly enhanced level of security, power and control. CLIQ keys can operate both mechanical and electronic CLIQ cylinders in the same master key system.



- Each key has a unique ID and is impossible to copy for technical reasons.
- Lost or stolen keys can be cancelled instantly.
- Keys incorporate an internal quartz clock and record an audit trail of the last 100 accesses, plus the last 10 foreign (non-system) key entries.
- Power is supplied by an easily replaced battery within the key, reducing installation and maintenance costs. The battery supplies power for two years or 20,000 operations.
- The key is water resistant and rated to IP55.
- An LED on the key flashes green or red to show if access is allowed or denied. Audio feedback is also given: the key beeps once to show access is allowed or three times to show access is denied.

Mechanical User Keys

ASSA keys incorporate the new dp™ technology, patented to 2023, to ensure the highest level of physical security and resistance to illicit key duplication. These keys operate mechanical cylinders only.

- Patented active blocking mechanism.
- Features both active and hidden sidecodes on the key.



System Keys

Master Control Key (MC Key)

Master setup key – responsible for the master administration and programming of the system. A unique password is required for the use of this key. Only one is supplied per system.



Control Key (C Key)

Setup key – responsible for the administration of the system. A unique password is required and several can be incorporated into the system to permit operation by multiple administrators.



Contact Key

System commissioning key connected to the programming device by cable.

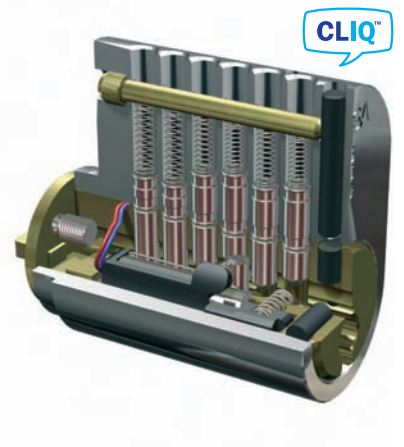


Cylinders

CLIQ Cylinders

CLIQ cylinders feature an electromechanical blocking element on the sidebar for enhanced security, as well as offering all the security features of mechanical cylinder technology. Each cylinder has a unique ID and incorporates an electronic chip that stores data in an encrypted format. CLIQ cylinders can only be operated by CLIQ keys.

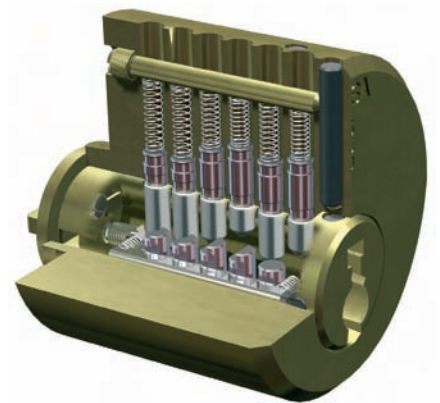
- The system is off-line and requires no wires or cabling – power is provided by the key. The 'sleeping' database wakes up once a CLIQ key is inserted into the cylinder.
- The cylinders record an audit trail of the last 1,000 accesses, plus the last 10 foreign (non-system) key entries.
- Cylinders store information on 1,000 authorised or non-authorised user groups.
- Cylinders are suitable for external use, and conform to BS EN 1303. Operating temperatures are between -40° and +80°.



Mechanical Cylinders

ASSA dp™ is our new technology offering the highest level of mechanical cylinder security currently available. The patented sidebar mechanism allows for master keying on two levels – using both the top pins and the side pins. The mechanical cylinders can be operated by both mechanical and CLIQ keys.

- Meets the requirements of BS EN 1303 : 2005 at the highest levels: Security Grade 6 and Attack Resistance Grade 2.
- All vital parts are protected by specially tempered pins for resistance against physical attack.
- False gate positions designed for increased protection against picking and manipulation.
- Force controlled sidecode function.
- Developed for both advanced and traditional system solutions.



Cylinder Shapes

Both mechanical and CLIQ cylinders are available in the shapes below, and all of these may be included in the same master key system:



Scandinavian Oval
and Round



Round Threaded
Mortice and Rim



Euro Profile and
Oval Profile



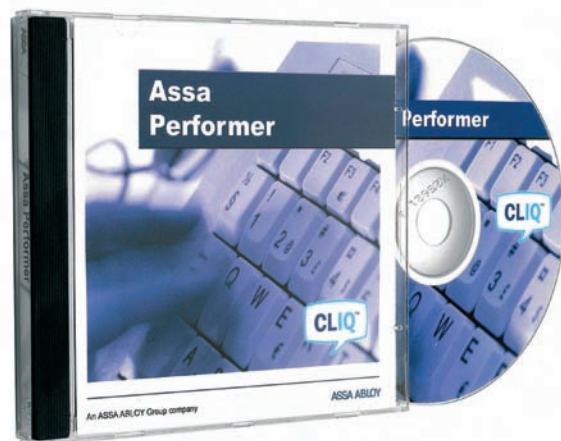
Padlocks and
Cam Locks

Systems

Complete Key Management

Our new key management software, ASSA Performer, is designed to complement the CLIQ system. It provides a user-friendly yet powerful means to commission, program and administer your system. The software package incorporates the complete system lockchart, including all mechanical and CLIQ cylinders and keys. The software can incorporate an unlimited number of master key systems, and can operate stand-alone or networked.

- Full programming of keys and cylinders.
- Facility to allow or remove accesses for user keys.
- Changing the status of the key – active / lost / stolen.
- Setting time restrictions and schedules for user keys.
- Full audit trail records history for both cylinders and keys, including foreign (non-system) accesses.
- Full access to information on which user has access to which key, in which doors and where these doors are located.
- The system may be connected to the address book, email and calendar facilities of Microsoft Outlook® to keep track of users and issue reminders.
- Full reporting and search functions.
- Functions and reports for handing out and returning keys.
- Ordering additional keys from suppliers.



Program on PC



Programming Device



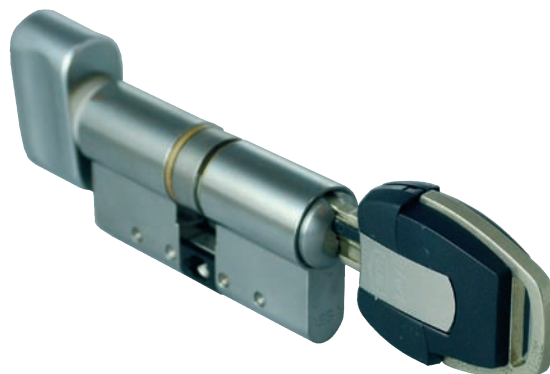
Benefits of CLIQ

Cancelling lost or stolen keys

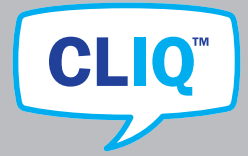
CLIQ means that your security is not threatened when a key is compromised. Simply cancel the key in the database, then use the C Key to update the cylinders and program them not to accept the cancelled key. No risk to your security, and no additional expense.

Reading audit trails

Simply by inserting a key into the programming device, the system administrator can discover which locks that key has been used in, and when. Tracing a security breach becomes easy and fast. Cylinder audit trails can also be collected and then checked by using the C Key.



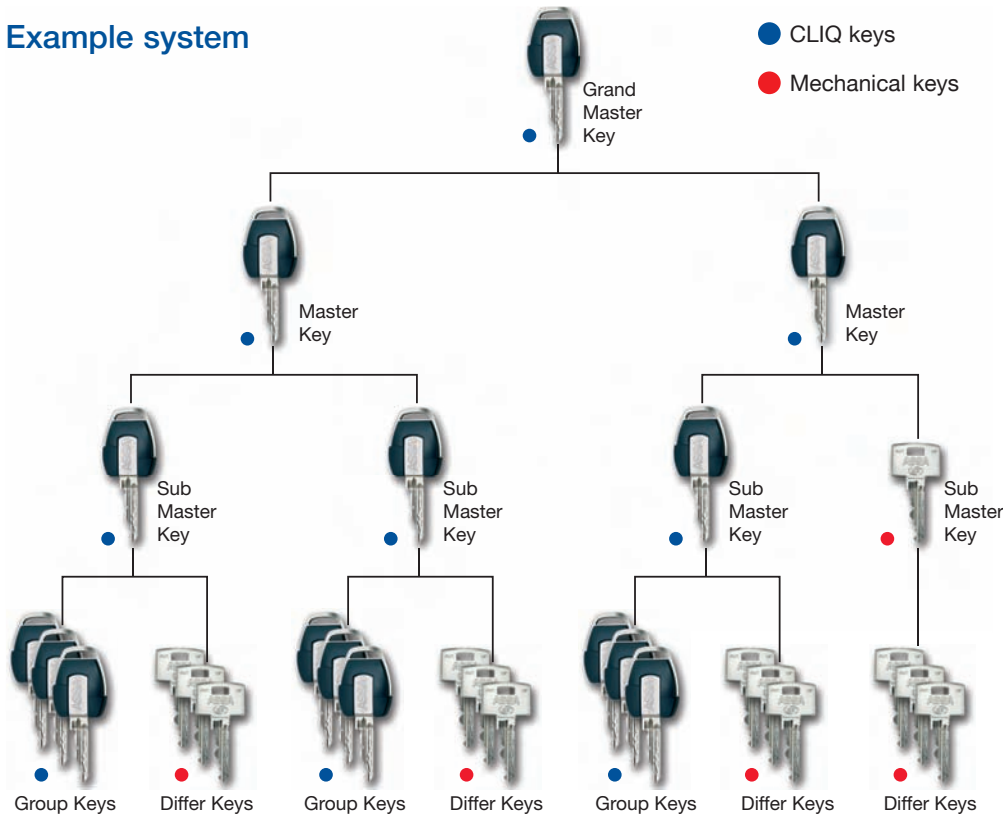
Specification



A Guide to Specifiers

The new CLIQ system gives you the flexibility of incorporating both CLIQ and mechanical cylinders and keys in the same system. CLIQ cylinders may be used on perimeter and high security doors – and CLIQ padlocks can be used to secure outbuildings and gates. Mechanical cylinders can be incorporated into the master key suite for those doors not requiring either very high security, timed access or audit trail functions.

Example system



The flexibility and reprogrammable nature of CLIQ means that it can satisfy your current operational requirements, while incorporating the capacity for expansion to meet future demands without having to plan these all out in advance.

Security and Cost Benefits

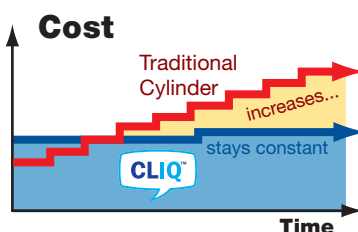
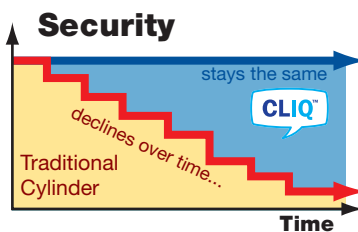
CLIQ is a cost efficient system that can help you maintain your level of security over time.

Organisational changes will no longer mean additional costs, because you can now reprogram your cylinders and keys.

Lost keys will no longer require you to go to the expense and inconvenience of replacing cylinders in order to prevent a serious breach of your security, because you can simply cancel the keys.

Contractors, visitors and staff no longer receive more access than they actually require – thus avoiding a threat to security, because their access rights can be programmed into their key.

You are no longer left to wonder who had access to a particular area after hours, or who might be responsible for thefts from a particular area, because this is recorded. The audit trail thus not only acts as a way of monitoring movement, but can deter unauthorised access to the premises.



CLIQ ensures a constant level of security and cost efficiency over the lifetime of the system



A concept for tomorrow, today

ASSA ABLOY

ASSA ABLOY Architectural Solutions
75 Sumner Road
Croydon
CR0 3LN
T: 020 8688 5191
F: 020 8688 0285

Email: sales@assaabloy.co.uk
Web: www.assaabloy.co.uk

ASSA ABLOY Architectural Solutions provides an extensive range of high quality, reliable locks and hardware supported by excellent customer service, making our ASSA and UNION brands the first choice for commercial, government and institutional end users.

ASSA ABLOY is the world's leading manufacturer and supplier of locking solutions, meeting tough end-user demands for safety, security and user friendliness.