



## TECHNOLOGY

Magnetic Stripe: highly functional and flexible system. Cost effective and reliable. Encrypted encoding of the data on the card.  
Possibility to encode ISO codes in the first and second track of the card to integrate it with other applications.  
Lost cards can be easily and securely cancelled.

## SECURITY

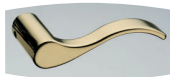
Non volatile memory. Information is not lost when the battery is off or during the battery change process.  
The lock is fed with standard batteries.  
When the lock does not open, the handle turns freely, avoiding the possibility of forcing the lock.  
Option to install a mechanical cylinder for an emergency opening.

## HANDLES

Inhova offers a large collection of handles that can be fitted with any kind of doors and styles:



TOLEDO



HERMES



BARCELONA



GRANADA



SENA



JEREZ



KIRA



ARKO



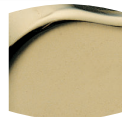
VECTOR



FLARE

## FINISHING

Large variety of finishes which allows a combination with any decoration style, either modern or classic:



Bright Brass



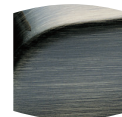
Satin Brass



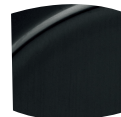
Bright Chrome



Satin Chrome



Antique Brass



Black mat



Optional PVD

## CUSTOMISATION

Customised lock with the hotel logo and/or image.



## HIDDEN EMERGENCY CYLINDER

The Donna electronic lock can be supplied with a mechanical cylinder which allows the user to open the door mechanically.  
The cylinder is a masterkeyed cylinder which allows the use of three master keys for higher security.  
Possibility to include unique master keys for total security.

## ADAPTABILITY

The Donna electronic lock can be installed with other mortise locks and part of an already installed electronic lock; the perfect solution for UPGRADE operations where the customer does not want to change the whole electronic lock.



Tempo



Universal



Swinging deadbolt lock



Donna double electronic lock

Multipoint projection lock

## PANIC EXIT SYSTEM AND EMERGENCY EXITS

Innova offers the whole solution which guarantees a quick and secure evacuation in panic situations (blackout, fire, etc.) by means of installing a Donna electronic lock with a panic exit device.

The panic exit devices are reversible, ready for fire doors, optional with a micro-switch, prepared for handicapped people, high range of models (monopoint, multipoint, doors with 1 or 2 leaves, ready for mortise lock), etc.

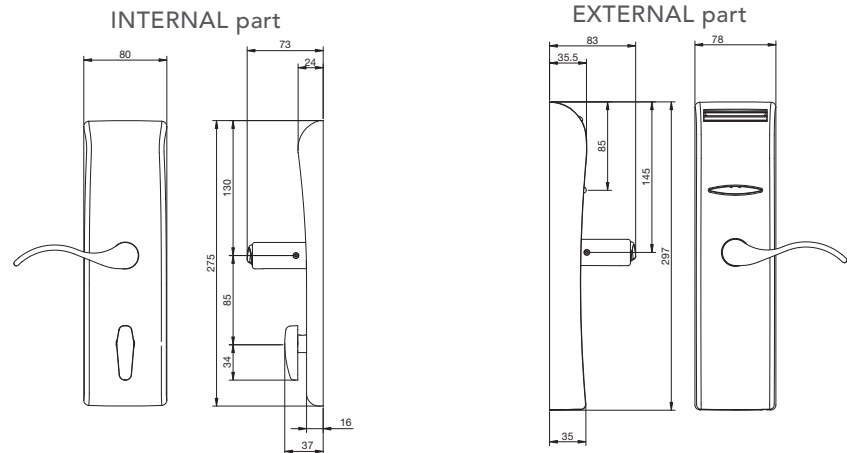
## CUSTOMIZED SOLUTIONS

We adapt to the needs of our customers.

Donna double electronic lock: solutions for shared doors between rooms.

Donna electronic locks for sliding doors and Donna electronic locks with multi-point projection lock.

## DIMENSIONS



## TECHNICAL FEATURES

### Electronic technical features:

#### READING MODULE

- Three-track ISO/ABA cards.
- Reading in track 3: tracks 1 and 2 free for other applications.
- Low coercitivity cards (300 Oersted) or high coercitivity (4000 Oersted).
- Deactivation mode by means of handle switch: the reading module detects the clutch action and it deactivates the motor. Low consumption.
- Optional keypad.

#### CONTROL MODULE

- Non volatile memory.
- Up to 1500 users and 1000 events (openings and/or attempts of openings).
- Clock and calendar in real time. 14 time zones with 5 periods of time in each of them.
- Green and red warning LEDs. Different warnings: low battery level, access denied, etc.
- Ways of operation:
  - Passage mode: lock always opens.
  - First user: lock in passage after the first authorised access for the user.
  - Standard: operation by default. Card needed for opening.
  - Double user: two authorised users must insert their card in order to open.

#### BATTERY MODULE

- Four 1,5V alkaline batteries like the LR6 AA.
- Estimated duration of the batteries: 3 or 4 years (30,000 cycles).
- Consumption: 20µA in rest mode.
- Batteries easily changed without having to dismantle the lock.
- The jack connected to the portable programmer is in the battery module.

### Mechanic technical features:

#### LOCK MECHANISM

- The motorised clutch activates the spindle part of the external handle.
- Disengaged lock: the handles spin loose. Access denied.
- Engaged lock: the handle spins on the square steel bar retracting the latch bolt and/or the bolt of the mortise lock. Access allowed.

#### MORTISE LOCK

- Compatible with European standard mortise locks. Axes distances between 70mm and 105mm.
- Possible to install with a wide range of mortise locks to adapt to any kind of door: Euro, Ansi, Din, tubular (deadbolt optional), for sliding doors, high security multipoint projection locks, etc.
- Antipanic function: turning the handle from inside, the door always opens.

#### OPERATIONAL CONDITIONS

- Humidity: up to 85% without condensation
- Temperature: between 0°C and 65°C with alkaline batteries.
- Fire: the Donna electronic lock is certified by the LICOF laboratory as fire resistant for 60 minutes (RF60).

#### WIDTH OF THE DOOR

- Standard width of the door from 35 to 110 mm.



Euro ADB  
20mm deadbolt projection

**Option  
EXTREME**